

Alternative Funding Streams

Presenter:

Allison Gottlieb

Director, Sponsored Programs
Education

Grants and Contracts Office



**Mount
Sinai**

Icahn School of Medicine at Mount Sinai

Alternative Funding Streams – Topics Covered

1. Am I making the most out of our funding database SPIN?
2. How do I find different sources of funding?
3. What are some tips and tricks to navigating GCO's online resources?

How Do I Find Different Funding Sources? Am I Making the Most Out of SPIN?

What is SPIN?

Funding database of over 40,000 Opportunities from 10,000 funding agencies across the globe, and growing.

New and existing opportunity information is updated daily.

How Do Find Different Funding Sources?

SPIN – How To Access?

Must either

Be on campus (recognized IP address)

or

Prompted for a password.

Don't have an InfoEd User Name and Password?

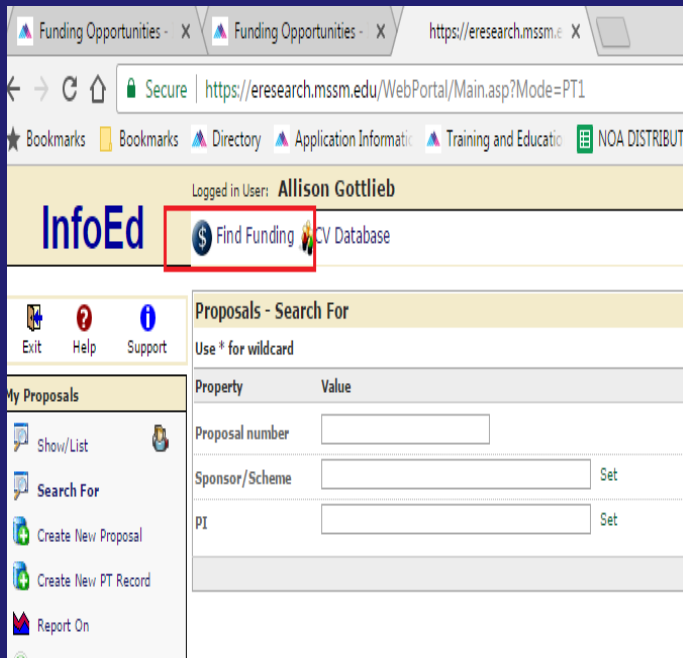
[Open a Research IT Ticket](#) > Help Topic InfoEd / New

User Request

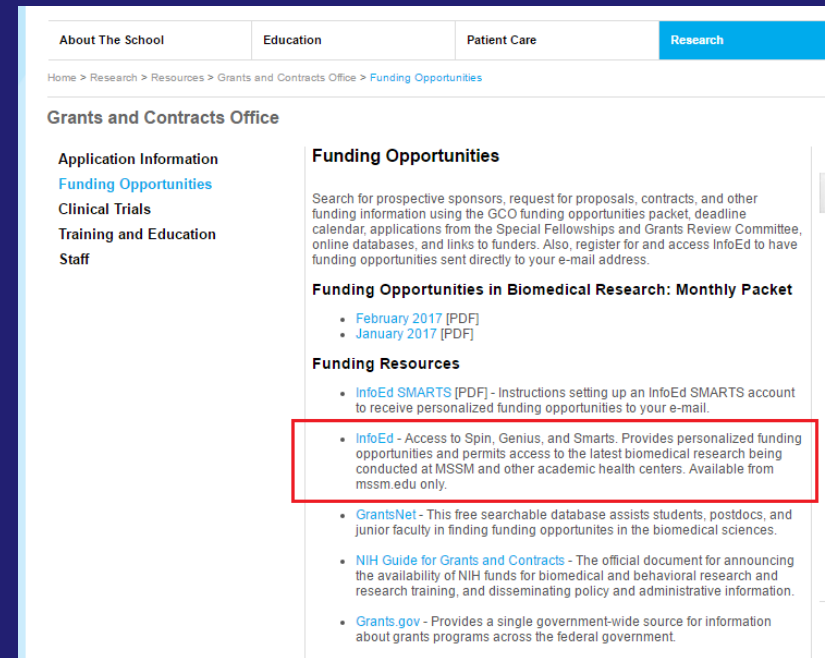
Comments section: Spin Access Only

How Do I Find Different Funding Sources?

SPIN – How To Access?



OR



Log in to InfoEd and click on Find Funding

Go to GCO's Funding Opportunity page and click on InfoEd.

How Do Find Different Funding Sources?

SPIN

SPIN Search - Google Chrome

Secure | https://spin.infoedglobal.com/Home/Search

SPIN World's Largest Database of Sponsored Funding Opportunities

Allison Gottlieb
Mount Sinai School of Medicine
[Sign Out](#)

[Search](#) [Preferences](#) [Saved Searches](#) [Funding Alerts](#) [Bookmarks](#) [Help](#)

[Clear](#) [Locate Funding](#)

You have no additional filters active. [Click here to edit them.](#)

How Do Find Different Funding Sources?

SPIN – How Does it Work?

Excerpted from SPIN on line instructions

- It is designed to allow you to perform as simple or as complex of a search as you would like to.
- Searches are carried out against the entire text of the SPIN programs.
- This includes opportunity titles, sponsor names, synopses, objectives, as well as funding opportunity numbers, email addresses, keywords, and several other fields.

How Do Find Different Funding Sources?

SPIN – How Does it Work?

The search automatically invokes inflectional forms of the entered words.

For example, a search for test will scan all SPIN programs for: test, tests, tested, and testing.

How Do I Find Different Funding Sources?

Complex Search – Input Examples

Adapted from SPIN's "Basic Search Help"

Example Input	Description
Biomedical research	Searches for records containing 'biomedical' and 'research' or their inflectional forms
Biomedical OR research	Searches for records containing 'biomedical' or 'research' or their inflectional forms
"Biomedical research"	Wrapping terms in double quotes searches for records containing the phrase 'biomedical research'
Biomedical -research	Inserting a minus symbol before a term searches for records containing 'biomedical' and not 'research'
+biomedical	Inserting a plus symbol before a term performs search after disabling expansion for inflectional forms
biomed*	Appending an asterisk to a term invokes a wildcard search: searches for records containing 'biomed' and any suffix
<biomedical research>	Wrapping terms in angled brackets searches for records containing 'biomedical' and 'research' and ranks results by the proximity of the two.
~ Biomedical research	Inserting a tilde searches for records containing 'biomedical' or its related terms in the thesaurus, and 'research'
~"Biomedical research"	Inserting a tilde before a quoted phrase searches for records containing the phrase 'biomedical research' or its related terms in the thesaurus

How Do Find Different Funding Sources?

SPIN – Demos

Basic Searches including “-” or NOT feature

Keyword Search

Advanced Searches

New/Modified Opportunities

Impending Deadlines

Also,

Save Searches

Funding Alerts

How Do Find Different Funding Sources?

SPIN – Training Videos

The screenshot shows the SPIN website interface. At the top left, the browser address bar displays "SPIN Search - Google Chrome" and "Secure | https://spin.infoedglobal.com/Home/Search". The SPIN logo is prominently displayed in yellow, with the tagline "World's Largest Database of Sponsored Funding Opportunities" to its right. In the top right corner, the user's name "Allison Gottlieb" and affiliation "Mount Sinai School of Medicine" are shown, along with a "Sign Out" link.

The main navigation bar includes "Home", "Saved Searches", "Funding Alerts", "Bookmarks", and "Help". Below this is a search bar with a "Clear" button and a "Locate Funding" button. A dropdown menu is open, showing "Basic Search Help" and "Training Videos" (highlighted with a red box).

The "Training Videos" section is titled "Training Videos" and contains a "Table of Contents" with 22 items. Item 20, "Conducting an Advanced Search", is highlighted with a red box. The rest of the page is mostly obscured by a large blue rectangle.

Table of Contents

1. Introduction
2. Engaging with SPIN Anonymously
3. Establishing a Username and Password
4. Signing into SPIN
5. Exploring the Primary SPIN tabs
6. Conducting a Basic Search
7. Configuring your Preferences Filters
8. Viewing Search Results
9. Sorting Search Results
10. Viewing a Program in SPIN
11. E-mailing Programs to Others
12. Configuring the Preview Pane in SPIN
13. Creating a Report in SPIN
14. Saving Searches
15. Managing Saved Searches
16. Managing SMARTS Funding Alerts
17. Bookmarking Programs in SPIN
18. Managing your Bookmarked Programs
19. Conducting an InfoEd Keyword Search
20. Conducting an Advanced Search
21. Accessing Public SPIN Searches
22. Accessing Public Bookmarks

How Do Find Different Funding Sources?

SPIN – Advanced Search - Foundations

The screenshot displays the SPIN database search interface. At the top left, the SPIN logo is followed by the text "World's Largest Database of Sponsored Funding Opportunities". On the top right, the user's name "Allison Gottlieb" and affiliation "Mount Sinai School of Medicine" are shown, along with a "Sign Out" link. A navigation bar contains "Search", "Preferences", "Saved Searches", "Funding Alerts", "Bookmarks", and "Help".

The search results area shows a filter for "Sponsor Type" set to "Equal To". A dropdown menu is open, listing various sponsor categories. The "Foundations" category is highlighted with a red box. Other categories include Charity, College/University, European Organisation, European Union Government, Federal, Government and Public Sector, Industrial Organisation, Drug Houses/Laboratories, Miscellaneous Non-Federal, Industrial Groups/Organizations, Memorial/Individual Funds, Non-Profit Organizations, Professional/Academic Assoc & Soc., Voluntary Health Organization, Other Federal Assistance, Public, Research Council, State, and US Federal.

Below the dropdown, the text "Results Found: 3" is visible. A table header is partially shown with columns for "SPIN ID", "Opportuni", "Sponsor Number", "Deadline Date", and "Funding Amount *". A "Strategic" link is also present.

How Do Find Different Funding Sources?

SPIN – SMARTS Automation – Saved Searches

Excerpted from SPIN on line instructions

- Automated notification of new and updated opportunities
- New opportunities and existing opportunity updates are automatically delivered to your email inbox
- Fully configurable to match your criteria
- Can run perpetually with no further management

Funding Alternatives to the NIH

Focusing on:

- 1. Online Partnership to Accelerate Research (OnPAR)**
- 2. National Science Foundation (NSF)**
- 3. Patient Centered Outcomes Research Institute (PCORI)**

Funding Alternatives to the NIH

My NIH grant wasn't funded. Where else can I submit it?

OnPAR – Online Partnership to Accelerate Research.

- Matches high-scoring “unfunded applications” with non-government organizations.
- Covers all NIH and all grants mechanisms from fellowships, R01 to SBIR/STTRs.
- PIs don't need to re-write the application
- How Do I Apply?

Funding Alternatives to the NIH

What's the Difference between the National Institutes of Health (NIH) and the National Science Foundation (NSF)? Should I apply to the NSF?

Source: [Principal Investigators.org](http://PrincipalInvestigators.org)

https://uminfopoint.umsystem.edu/media/ed/NIHvsNSF_Comparison_special_report.pdf

“If your project is in any way related to human health — even basic science that merely has some “potential” to affect the diagnosis or treatment of a disease — you stand a much better chance applying to NIH.”

- Areas of overlap
- Differences in Review
- FAQs

Funding Alternatives to the NIH

National Science Foundation (NSF) grants at ISMMS

ISMMS Currently has

- 7 active grants including the depts. of Psychiatry (1), Pharmacological Sciences (2), Health System Design and Global Health (1), Genetics and Genomics Sciences (1), Microbiology (1), and Oncological Sciences (1)
- 4 pending/TBF
- 85 Closed
- 269 Not funded, including resubmissions

Funding Alternatives to the NIH

Patient Centered Outcomes Research Institute (PCORI)

<http://www.pcori.org/>

Vision:

Patients and the public have information they can use to make decisions that reflect their desired health outcomes.

Mission:

PCORI helps people make informed healthcare decisions, and improves healthcare delivery and outcomes, by producing and promoting high-integrity, evidence-based information that comes from research guided by patients, caregivers, and the broader healthcare community.

Funding Alternatives to the NIH

Patient Centered Outcomes Research Institute (PCORI)

Example:

Accompany coordinating care for children with complex medical needs. A mother of such a child was asked to partner on a project to improve healthcare systems by engaging caregivers to collect important information about the most common challenges for a vulnerable population.

How?

LOI then invitation to apply

Funding Alternatives to the NIH

PCORI grants at ISMMS

ISMMS Currently has

- 3 active grants
- 0 pending
- 0 Closed
- 27 Not funded, including resubmissions

**What Other Resources does
the GCO Offer?**

Finding Funding Alternatives to the NIH

- 1. SPIN**
- 2. Monthly Funding Opp Packet**
- 3. Other Resources**

How Do Find Different Funding Sources?

GCO Funding Opportunity Webpage

www.mssm.edu/grants

Then Go To
Funding
Opportunities page

Home > Research > Resources > Grants and Contracts Office > [Funding Opportunities](#)

Grants and Contracts Office

- [Application Information](#)
- [Funding Opportunities](#)
- [Clinical Trials](#)
- [Training and Education](#)
- [Staff](#)

Funding Opportunities

Search for prospective sponsors, request for proposals, contracts, and other funding information using the GCO funding opportunities packet, deadline calendar, applications from the Special Fellowships and Grants Review Committee, online databases, and links to funders. Also, register for and access InfoEd to have funding opportunities sent directly to your e-mail address.

Funding Opportunities in Biomedical Research: Monthly Packet

- [February 2017 \[PDF\]](#)
- [January 2017 \[PDF\]](#)

Funding Resources

- [InfoEd SMARTS \[PDF\]](#) - Instructions setting up an InfoEd SMARTS account to receive personalized funding opportunities to your e-mail.
- [InfoEd - Access to Spin, Genius, and Smarts](#). Provides personalized funding opportunities and permits access to the latest biomedical research being conducted at M.SSM and other academic health centers. Available from mssm.edu only.
- [GrantsNet](#) - This free searchable database assists students, postdocs, and junior faculty in finding funding opportunities in the biomedical sciences.
- [NIH Guide for Grants and Contracts](#) - The official document for announcing the availability of NIH funds for biomedical and behavioral research and research training, and disseminating policy and administrative information.
- [Grants.gov](#) - Provides a single government-wide source for information about grants programs across the federal government.

Committee on Special Awards (CoSA)

Many foundations restrict the number of grant applications that can be submitted from any single institution. In these cases, applications are reviewed by the Committee on Special Awards. Primary reviewers present the proposal to the committee for discussion. Each member votes afterward by secret ballot and ranks the proposal. Based on their ranking, the committee recommends applications to the Dean for his approval. To see a listing of special grant, scholarship, and fellowship opportunities, please visit the [Upcoming Awards](#) section of the CoSA Web site.

Contracts

GCO has compiled links outside of the Mount Sinai Grants and Contracts Office to contract resources as follows:

- [Commerce Business Daily](#)
The Commerce Business Daily (CBD) lists notices of proposed government procurement actions, contract awards, sales of government property, and other procurement information. Each notice appears in the CBD only once.
- [NIH Contracts](#)
The NIH buys products and services to support, conduct, and acquire both basic and applied behavioral and biomedical research.

Crowdfunding

[Crowdfunding](#) is a mechanism to fund a project by collecting small amounts of money from a lot of people. For hospitals, biomedical research institutes and medical schools, crowdfunding is emerging as an important means by which to fund new and innovative ideas as well as to expand ongoing initiatives to cure disease and improve patient care. The basic premise is to pitch your project (on the internet), tell them about your idea (usually in a video), and tell them how much it will cost to get the data that you need or to implement your idea.

How Do Find Different Funding Sources?

GCO Funding Opportunity Webpage

GCO Monthly Funding Opportunity Packet

Culled from SPIN and categorized by:

- Deadline
- Funding Agency type

To Search can do “CTRL F”

Example: junior faculty, basic

Where else can I find funding opportunities?

How Do Find Different Funding Sources?

What does a simple Googles search yield?

Search: junior faculty funding opportunity

And the results are

How Do Find Different Funding Sources?

Does the NIH Post Non-NIH Funding Opportunities?

Yes.

<https://www.fic.nih.gov/Funding/NonNIH/Pages/default.aspx>

Tips and Tricks Navigating GCO's Online Resources

Policy - Don't Forget to Submit!

All research and sponsored project applications, excluding BRANY projects, are prepared in InfoEd and routed for approval through the department(s) in which there are key personnel.

Policy - Don't Forget to Submit!

**This occurs prior to
submission to the Funding
Agency.**

Process Shortcut

Do I also need to submit my IRB or IACUC application to these offices too?

Yes, but you can do so later when you find out your project will be funded. Include this form in the Internal Documents tab of the InfoEd application.

[Compliance \(IRB/IACUC\) Application Waiver Form](#)

Questions?